

Portable & At-Home Oxygen Concentrators

PATIENT INFO KIT

**Regain Your
Freedom to Travel**



Wearable, Portable, and At-Home Technology

Available at your local Caire Inc. partner:

Lifeline Health Services

Unit 1, 18 Kearns Crescent
Ardross, Western Australia 6153
Tel: 1300 933 211

www.lifelinecorp.com.au

SEE PRODUCT WARRANTY STATEMENT FOR COMPLETE INFORMATION.
Please consult the applicable product instructions for use for product indications, contraindications, warnings, precautions, and detailed safety information.

© 2018 CAIRE Inc. All Rights Reserved.



TABLE OF CONTENTS

3	ABOUT US
4	KNOWLEDGE CENTER
6	PRODUCT SELECTION GUIDE
7	FREESTYLE® PORTABLE OXYGEN CONCENTRATOR
8	FREESTYLE® 5 PORTABLE OXYGEN CONCENTRATOR
9	FOCUS™ PORTABLE OXYGEN CONCENTRATOR
10	ECLIPSE 5® PORTABLE OXYGEN CONCENTRATOR
11	COMPANION 5™ AT-HOME OXYGEN CONCENTRATOR

Available at your local Caire Inc. partner:

Lifeline Health Services

Unit 1, 18 Kearns Crescent
Ardross, Western Australia 6153
Tel: 1300 933 211

www.lifelinecorp.com.au

SEE PRODUCT WARRANTY STATEMENT FOR COMPLETE INFORMATION.
Please consult the applicable product instructions for use for product indications, contraindications, warnings, precautions, and detailed safety information.

© 2018 CAIRE Inc. All Rights Reserved.



ABOUT US

Lifeline Health Services is a premier provider of healthcare technology solutions including medical oxygen concentrators and other oxygen delivery equipment for individuals with respiratory conditions.

Our specialist service network are proud to be the leading oxygen therapy provider in Western Australia. We help oxygen users in WA breathe easier with our 24 hour, day and night service response.



Why Portable Oxygen Concentrators?

Get the independence you deserve with a CAIRE portable oxygen concentrator. Whether it's traveling across the country by plane or car, running errands, visiting family, working in the garden, or simply walking in the park, CAIRE® concentrators give you the mobility and freedom to live your life to the fullest.

Portable oxygen concentrators will never run out of oxygen as long as power is available. Rather than storing oxygen like a tank, they draw in room air and concentrate it to >90% O₂. They are fully functional on wall (AC) power, vehicle (DC) power, and a rechargeable battery pack. Our pulse dose Focus™, FreeStyle® and FreeStyle® 5 units are worn with a shoulder strap or backpack, and our Eclipse 5® offers both pulse dose and continuous flow, while being easily mobile with an adjustable rolling cart.



Get the oxygen you need anywhere, anytime!

- No tanks to carry around
- No complicated filling process
- Never worry about your oxygen supply running out as long as power is available
- Lengthy battery life up to 6 hours and extra battery options available
- Recharge and operate the concentrator anywhere power is available
- FAA-approved for use on commercial aircraft
- Simple one-touch controls and operations
- Peace of mind with proprietary clinical features that ensure you get the oxygen you need
- All products are wearable or easily transported on a rolling cart

Available at your local Caire Inc. partner:

Lifeline Health Services

Unit 1, 18 Kearns Crescent
Ardross, Western Australia 6153
Tel: 1300 933 211

www.lifelinecorp.com.au



SEE PRODUCT WARRANTY STATEMENT FOR COMPLETE INFORMATION. Please consult the applicable product instructions for use for product indications, contraindications, warnings, precautions, and detailed safety information.

© 2018 CAIRE Inc. All Rights Reserved.

KNOWLEDGE CENTER

HOW DOES AN OXYGEN CONCENTRATOR WORK?

The ambient air we breathe contains approximately 21% oxygen, 78% nitrogen, and 1% other gasses. An oxygen concentrator does not “create” its own oxygen, it draws air into the machine using an air compressor. The air enters the concentrator it passes through filters that remove dust and other small particulates. Once the air is filtered and inside of the concentrator, the air passes through an adsorbent material called molecular sieve. The molecular sieve adsorbs the nitrogen in the room air, separating the oxygen from it and allowing only the oxygen to pass through. Oxygen exits the concentrator and is delivered to the user in high concentrations of > 90% .



Explanation of Pulse Flow or Pulse Dose

Pulse flow or pulse dose is the delivery of a “bolus,” or puff, of oxygen every time you breathe, or more specifically, when you inhale. A sensor in the oxygen concentrator detects the force or pressure of your breath and triggers the concentrator to deliver the dose of oxygen prescribed by your doctor. A dripping water faucet is a great visual example of how pulse flow is intermittently delivered.

Pulse flow delivery on a portable oxygen concentrator can help maximize your unit’s battery life by giving you oxygen only when you inhale and not wasting precious battery power with constant delivery. Pulse flow is typically used for portability and when you are active. Your doctor will prescribe a pulse flow setting number for you to use.

Available at your local CAIRE Inc. partner:

Lifeline Health Services

Unit 1, 18 Kearns Crescent
Ardross, Western Australia 6153
Tel: 1300 933 211

www.lifelinecorp.com.au

SEE PRODUCT WARRANTY STATEMENT FOR COMPLETE INFORMATION. Please consult the applicable product instructions for use for product indications, contraindications, warnings, precautions, and detailed safety information.

© 2018 CAIRE Inc. All Rights Reserved.



Explanation of Continuous Flow

Continuous flow delivers oxygen in a constant and uninterrupted stream. Much like turning on a water faucet, continuous flow of oxygen is delivered at a steady rate. The amount of oxygen you receive is prescribed in liters per minute (LPM) by your doctor. The most common settings are between 2–5 LPM. Users with more severe disease states may require higher flow rates between 6–15 LPM. Continuous flow is typically used at home and while sleeping. It also can be used for portability if your doctor has not prescribed pulse flow.

What is CAIRE's UltraSense™ Technology?

CAIRE's UltraSense™ Technology offers sensitive breath detection that ensures a pulse of oxygen is delivered with each breath and when oxygen delivery is most critical allowing for a wider variety of patients to use the device.

CAIRE's UltraSense™ Technology is available on the Focus™, FreeStyle®, and FreeStyle® 5.

What is CAIRE's autoSAT® Technology?

CAIRE's autoSAT® Technology helps maintain your oxygen levels by adjusting the device to meet your changing respiratory rate. Like cruise control adjusts a car's performance to maintain constant speed, autoSAT® adjusts oxygen concentrator performance to ensure the prescribed amount of oxygen is delivered with each breath whether you are at rest or exercising. CAIRE's autoSAT® Technology is available on the Eclipse 5®.

Available at your local Caire Inc. partner:

Lifeline Health Services

Unit 1, 18 Kearns Crescent
Ardross, Western Australia 6153
Tel: 1300 933 211

www.lifelinecorp.com.au



SEE PRODUCT WARRANTY STATEMENT FOR COMPLETE INFORMATION.
Please consult the applicable product instructions for use for product indications, contraindications, warnings, precautions, and detailed safety information.

© 2018 CAIRE Inc. All Rights Reserved.

PRODUCT SELECTION GUIDE



NOTE: Supplemental oxygen therapy requires a prescription from a doctor. Please consult your doctor for the flow rate and prescription that is right for you.

Available at your local Caire Inc. partner:

Lifeline Health Services

Unit 1, 18 Kearns Crescent
Ardross, Western Australia 6153
Tel: 1300 933 211

www.lifelinecorp.com.au

SEE PRODUCT WARRANTY STATEMENT FOR COMPLETE INFORMATION.
Please consult the applicable product instructions for use for product indications, contraindications, warnings, precautions, and detailed safety information.

© 2018 CAIRE Inc. All Rights Reserved.

FREESTYLE®

Portable Oxygen Concentrator

Includes

- Portable Oxygen Concentrator
- Carry Bag
- AC/DC Universal Power Supply and Cords
- Carry-All Accessory Bag
- Shoulder Strap

Product Features

- Under 5 pounds with a small compact frame
- Replaceable battery pack with up to 3½ hour battery life at setting 2
- Easy to carry with a handle, or wear with a shoulder strap or backpack
- FAA approved for commercial airline use
- Fully functional on wall (AC) or motor vehicle (DC) power
- UltraSense™ Technology

Specifications

FLOW RATE

Pulse 1-3

DIMENSIONS

8.6 x 6.1 x 3.6 in
(21.8 x 15.5 x 9.1 cm)

WEIGHT

4.9 lbs (2.2 kg)

BATTERY DURATION

Setting 1 - 6.5 hours (6:30)
Setting 2 - 3.5 hours (3:30)
Setting 3 - 3.0 hours (3:00)

BATTERY RECHARGE

4 – 5 hours

WARRANTY

3 years FreeStyle
1 year battery and power supplies



Available Accessories



CARRY BAG



AC/DC POWER SUPPLY
(CORDS AVAILABLE SEPARATELY)



CARRY-ALL ACCESSORY BAG



BACKPACK HARNESS



EXTRA BATTERY PACK



DESKTOP CHARGER



SPARE INTAKE FILTER



Available at your local CAIRE Inc. partner:

Lifeline Health Services

Unit 1, 18 Kearns Crescent
Ardross, Western Australia 6153
Tel: 1300 933 211

www.lifelinecorp.com.au

SEE PRODUCT WARRANTY STATEMENT FOR COMPLETE INFORMATION.
Please consult the applicable product instructions for use for product indications, contraindications, warnings, precautions, and detailed safety information.

© 2018 CAIRE Inc. All Rights Reserved.

FREESTYLE[®] 5

Portable Oxygen Concentrator

Includes

- Portable Concentrator
- Carry Bag
- Battery Pack
- AC Power Supply
- DC Power Supply
- Carry-All Accessory Bag
- Shoulder Strap

Product Features

- User-replaceable battery pack with up to 2½ hour battery life at setting 2
- Easy to carry with a handle, or wear with a shoulder strap or backpack
- FAA-approved for commercial airline use
- Fully functional on wall (AC) or motor vehicle (DC) power
- Simple, one-touch operation
- UltraSense™ Technology

Specifications

FLOW RATE

Pulse 1-5

DIMENSIONS

10.7 x 6.6 x 4.4 in
(27.2 x 16.8 x 11.2 cm)

WEIGHT

6.7 lbs (3.0 kg)

BATTERY DURATION

Setting 1 - 4.25 hours (4:15)
Setting 2 - 2.5 hours (2:30)
Setting 3 - 2.0 hours (2:00)
Setting 4 - 1.75 hours (1:45)
Setting 5 - 1.25 hours (1:15)

BATTERY RECHARGE

4 – 5 hours

WARRANTY

3 years FreeStyle 5
1 year battery and
power supplies



Available Accessories



CARRY BAG



AC POWER SUPPLY
(CORDS AVAILABLE
SEPARATELY)



DC POWER SUPPLY



BACKPACK HARNESS



EXTRA BATTERY PACK



DESKTOP CHARGER



SPARE INTAKE FILTER



**CARRY-ALL
ACCESSORY BAG**

Available at your local Caire Inc. partner:

Lifeline Health Services

Unit 1, 18 Kearns Crescent
Ardross, Western Australia 6153
Tel: 1300 933 211

www.lifelinecorp.com.au



SEE PRODUCT WARRANTY STATEMENT FOR COMPLETE INFORMATION.
Please consult the applicable product instructions for use for product indications, contraindications, warnings, precautions, and detailed safety information.

© 2018 CAIRE Inc. All Rights Reserved.

FOCUS™

Portable Oxygen Concentrator

Includes

- Portable Concentrator
- 2 Batteries
- AC/DC Universal Power Supply & Cords
- Carry Bag w/ Battery Pockets
- Battery Charging and Operation Coiled Cords
- Carry-All Accessory Bag
- Shoulder Strap
- Battery Case

Product Features

- Only 1.75 lbs (0.8 kg)
- Simple-to-use—no settings to adjust and one-touch operation
- No patient maintenance
- FAA approved for commercial airline use
- Wearable via belt clip, carry handle, or shoulder strap
- Can swap and exchange batteries for long durations
- Fully functional on wall (AC) or motor vehicle (DC) power

Specifications

FLOW RATE

Pulse 2

WEIGHT

1.75 lbs (0.8 kg)

BATTERY RECHARGE

4 hours

DIMENSIONS

6.4 x 4.8 x 2.5 in
(16.4 x 12.2 x 6.1 cm)

SOUND LEVEL

45 dB(A) @ Setting 2

WARRANTY

3 years Focus
1 year battery and power supplies

BATTERY DURATION

3 hrs (1.5 per battery –
2 included)



Available Accessories



EXTRA BATTERIES



BELT CLIP BATTERY CASE*



CARRYING BAG*



BAG W/BATTERY POCKETS*

*Items sold together as a bag kit.



AC/DC POWER SUPPLY
(CORDS AVAILABLE SEPARATELY)



BATTERY CHARGING CABLE



BATTERY-TO-UNIT CABLE



CARRY-ALL ACCESSORY BAG

Available at your local Caire Inc. partner:

Lifeline Health Services

Unit 1, 18 Kearns Crescent
Ardross, Western Australia 6153
Tel: 1300 933 211

www.lifelinecorp.com.au



SEE PRODUCT WARRANTY STATEMENT FOR COMPLETE INFORMATION. Please consult the applicable product instructions for use for product indications, contraindications, warnings, precautions, and detailed safety information.

© 2018 CAIRE Inc. All Rights Reserved.

ECLIPSE 5[®]

Portable Oxygen Concentrator

Includes

- Portable Concentrator
- Power Cartridge (Battery)
- AC Power Supply
- DC Power Supply
- Removable Cart
- Accessory Bag
- Nasal Cannula
- Spare Intake Filter

Product Features

- Runs on wall outlet (AC), motor vehicle (DC) or rechargeable battery power
- In the car – all flow rates available and battery will recharge while running at 2 LPM or less
- 2 hours battery at 2 LPM with single battery
- Over 5 hours of battery duration at 2 pulse
- Removable rolling cart with adjustable handle
- FAA-approved for commercial airline use

Specifications

FLOW RATE

0.5–3.0 LPM
1–9 Pulse Settings

DIMENSIONS

19.3 x 12.3 x 7.1 inches
(49.0 x 31.2 x 18.0 cm)

WEIGHT

18.4 lbs (8.3 kg)

SOUND LEVEL

40 dB(A) @ Pulse Setting 3

BATTERY DURATION

2 LPM Continuous – 2 Hours
Setting 2 Pulse – 5.1 Hours

BATTERY RECHARGE

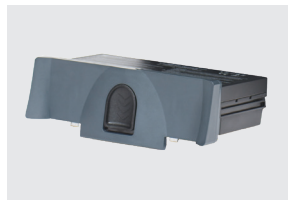
2–5 hours dependent
upon flow

WARRANTY

3 Years Eclipse 5
1 Year Battery and
Accessories



Available Accessories



**POWER CARTRIDGE
(BATTERY)**



AC POWER SUPPLY



DC POWER SUPPLY



CART



DESKTOP CHARGER



PROTECTIVE COVER



TRAVEL CASE

ALSO AVAILABLE:
• WHEELCHAIR PACK
• ACCESSORY BAG

Available at your local CAIRE Inc. partner:

Lifeline Health Services

Unit 1, 18 Kearns Crescent
Ardross, Western Australia 6153
Tel: 1300 933 211

www.lifelinecorp.com.au



SEE PRODUCT WARRANTY STATEMENT FOR COMPLETE INFORMATION.
Please consult the applicable product instructions for use for product indications, contraindications, warnings, precautions, and detailed safety information.

© 2018 CAIRE Inc. All Rights Reserved.

COMPANION 5™

5 LPM At-Home Oxygen Concentrator

Includes

- Oxygen Concentrator
- Humidifier Adaptor Tube

Product Features

- Small profile fits easily into home
- Low power draw
- Easy-access humidifier stand
- Simple to read controls and alarms

Specifications

FLOW RATE
0.5 - 5.0 LPM

SOUND LEVEL
50 dB(A) (Typical)

WARRANTY
3 Years

DIMENSIONS
21.5 x 12.5 x 13.5 inches
(54.6 x 31.8 x 34.2 cm)

POWER CONSUMPTION
280 W @2 LPM,
350 W Maximum

WEIGHT
36 lbs (16.3 kg)

MAXIMUM TUBING
50 ft (15.2 m)



Available Accessories



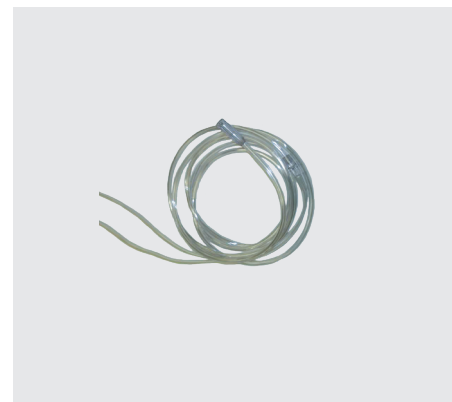
HUMIDIFIER ADAPTOR & BOTTLE

Humidifier Adaptor (9 in/23 cm)
Ask your doctor or therapist if
humidification is right for you.



NASAL CANNULAS

Various lengths are available.
(7 ft and 25 ft)
Talk to our Customer Service team
to learn more.



OXYGEN TUBING

Comes in: 7 ft (2.1 m), 25 ft (7.6 m),
and 50 ft (15.2 m).



Available at your local Caire Inc. partner:

Lifeline Health Services

Unit 1, 18 Kearns Crescent
Ardross, Western Australia 6153
Tel: 1300 933 211

www.lifelinecorp.com.au

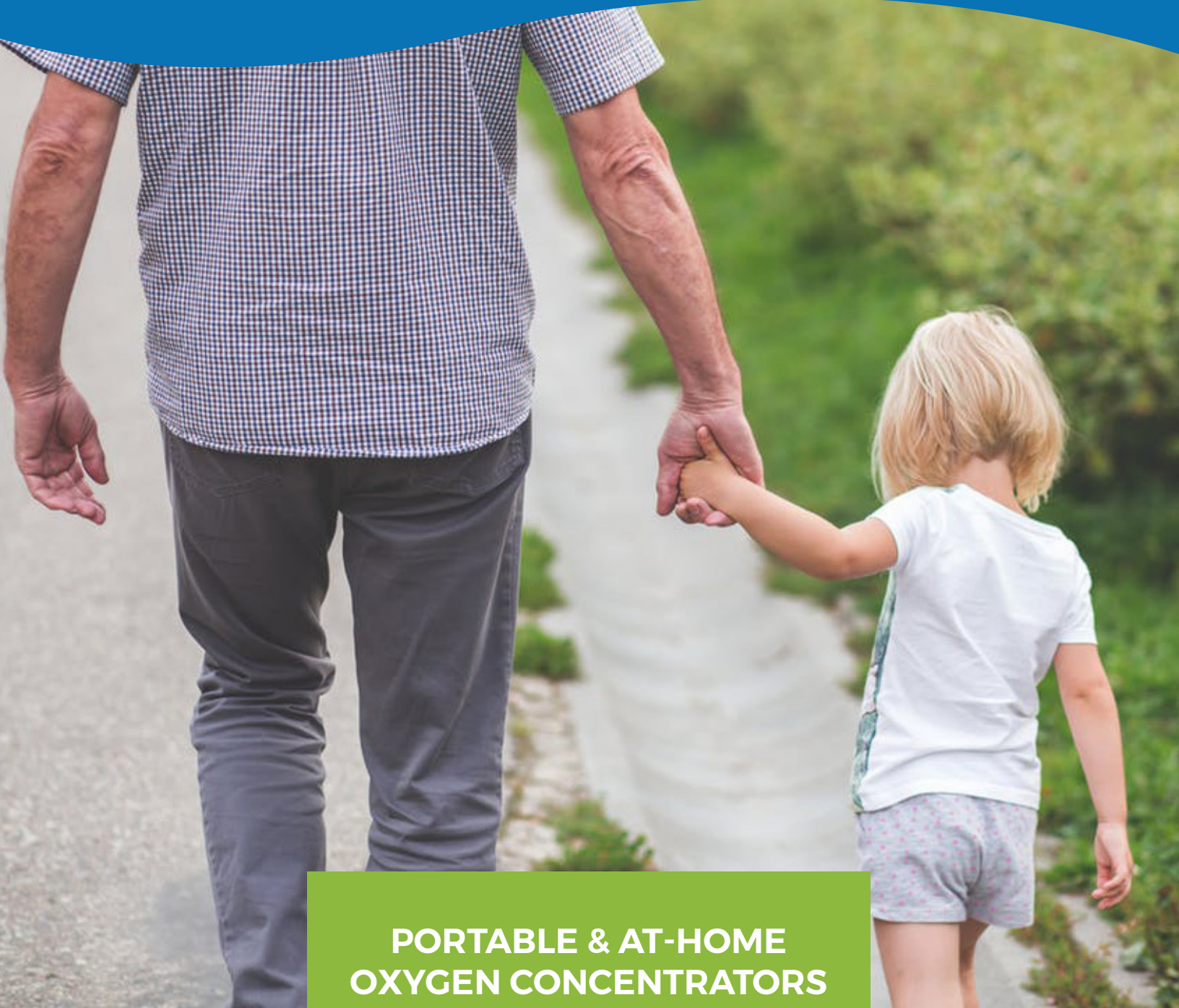
*CAIREview is not intended for active patient monitoring.

SEE PRODUCT WARRANTY STATEMENT FOR COMPLETE INFORMATION.
Please consult the applicable product instructions for use for product
indications, contraindications, warnings, precautions, and detailed
safety information.

© 2018 CAIRE Inc. All Rights Reserved.

Portable & At Home Oxygen Concentrators

PATIENT INFO KIT



PORTABLE & AT-HOME OXYGEN CONCENTRATORS

Trust CAIRE to provide you with the portable and at-home oxygen concentrator you need to engage in all of life's activities. Call today to learn more.

Available at your local Caire Inc. partner:

Lifeline Health Services

Unit 1, 18 Kearns Crescent
Ardross, Western Australia 6153
Tel: 1300 933 211

www.lifelinecorp.com.au



SEE PRODUCT WARRANTY STATEMENT FOR COMPLETE INFORMATION. Please consult the applicable product instructions for use for product indications, contraindications, warnings, precautions, and detailed safety information.

© 2018 CAIRE Inc. All Rights Reserved.

ML-CONC0144 B